

# LOOK



# YEAST!

ISSUE 5

WINTER/SPRING 2026

Christmas 2025 Get Together

SIR WILLIAM PEEL



## WHAT'S IN THIS ISSUE

Hadrian's Wall ale trail  
Ploughing through the ales

# Buses across East Bedfordshire with Grant Palmer



live bus tracking on our app  
concessionary passes welcome  
single fares £3 or less

Plan your journey  
[grantpalmer.com](http://grantpalmer.com)

# TABLE OF CONTENTS



14

- 6 THE REAL ALE TRAIL 2026**  
Two-month real ale trail featuring twelve pubs and guided walks
- 8 AWAY DAYS - EXPLAINED**  
Monthly pub crawls by train exploring towns, cities, and overnight trips.
- 10 HADRIAN'S WALL ALE TRAIL**  
Nine-day Hadrian's Wall walk with daughter, sampling northern pubs and ales.
- 12 PLOUGHING THROUGH THE ALES**  
Langford Plough's 4th Beer & Cider Festival: 45 drinks, music, fun.
- 14 HISTORIC BUS TOUR**  
CAMRA members enjoy Biggleswade charabanc pub tour, thanks organisers.

<b>Branch Diary (all dates and venues subject to confirmation)</b>		
<b>When</b>	<b>What</b>	<b>Where</b>
15 January	A tour of Brighton pubs	Brighton
19 January - 7pm	Discuss pub awards 2026/27	Cock, Broom
1 February - 29 March	East Beds Real Ale Trail plus Walks	Various start and finish locations
February 2026	A tour of Leeds City Centre pubs	Date TBC
March 2026	A tour of Walthamstow pubs	Date TBC
March/April 2026	Spring Beer Fest (date TBC)	The Crown, Biggleswade

<b>East Bedfordshire CAMRA Committee</b>	
Chairman	Barry Price
Vice-Chairman	Simon Reynolds
Secretary/Contact	Peter Josling
Treasurer	Rob Pullinger
Membership Secretary	Barry Price
Public Affairs Contact	Dave Strong
Pubs Data Co-ordinator	Barry Price
Brewery Liaison Officer	Dave Stong
Cider Representative	Tim Naisbitt
Pub Protection Officer	Mark Knight
Social Secretary	Peter Josling
Editor of Look Yeast	Peter Josling
Young Members' Officer	George Welsted
GBG Submissions Co-ordinator	Barry Price
Pub Promotions & Awards	Barry Price
Social Media Co-ordinator	Mark Knight
Website Co-ordinator	Chris Freeman
Minutes Secretary	Mel Draper

Recognise the best, with the CAMRA Good Beer Guide 2026. The definitive beer drinker's guide for those seeking the best pints in the nation's pubs.

Order your copy now at [shop1.camra.org.uk](http://shop1.camra.org.uk)

# A NOTE FROM THE CHAIRMAN

East Bedfordshire CAMRA Branch

Firstly may I wish all readers of 'Look Yeast!' a very Happy New Year and I hope that you all had a pleasant Christmas and New Year break.

I'm sure that many of you will have enjoyed the company of your friends and family and the pleasure of the hospitality at your local pub/club/wine bar where many licensees and stewards made a great effort to spread the good cheer of the season.

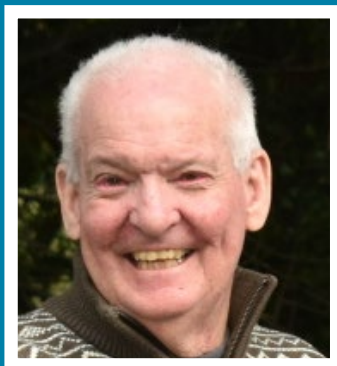
Now that the new year is upon us, all CAMRA Branches in the UK are compiling a list of pubs which they feel should be considered for the 2027 (no, that isn't a misprint) Good Beer Guide (GBG) and the East Bedfordshire Branch is no different. Some of our members have surveyed a number of pubs which an earlier meeting felt were worthy of inspection. Unfortunately we are only allocated ten pubs for the national GBG but it is generally felt that we could easily nominate three or four more that would meet the criteria for entry. Living in the East Bedfordshire Branch area means that there are plenty of good to very good pubs in which to enjoy your ales.

Preparations are already in place for the 4th Biggleswade Beer Festival held jointly between East Beds CAMRA and the Biggleswade Conservative Club. There will be a break with the previous policy of only selling Local Ales as the net for beers will be cast further afield with, I understand, some being 'imported' from Lancashire. Whatever your taste in Real Ales I feel sure that there will be something at the Festival to satisfy every palate.

In the meantime check what your 'local' has to offer and see if the licensee has any leeway to bring in guest ales you might want to try.

Cheers!

**Barry**



## DISCLAIMER

Look Yeast! © All rights reserved. East Beds CAMRA, CAMRA Ltd & LivingLife Publications Ltd accept no responsibility for any errors or omissions within this publication. The views expressed are those of the individual authors and are not necessarily those of the editor or committee. All images remain the copyright of their respective owners and may not be reproduced, copied or distributed without prior consent.

## ARTICLES & CONTRIBUTIONS

We welcome contributions that will benefit our readers, to submit an article, please email [secretary@eastbeds.camra.org.uk](mailto:secretary@eastbeds.camra.org.uk)

## ADVERTISING

Advertise your Pub/Venue/Special Event or local business. Look Yeast is issued 3 times a year and distributed to pubs, clubs and other outlets in the region.

Please contact LivingLife Publications for more information and to request a Media Guide.

**01462 41 42 65**

[admin@livinglifemagazine.co.uk](mailto:admin@livinglifemagazine.co.uk)

Pubs, Pints, People.



# Ever seen a Ginger Panther? No, but we've tried one!

CAMRA membership expands your choice of beer, pubs and festivals. Find the best pints, and the places you want to drink them.

Get £30 of beer vouchers, discounts on real ale, save on entry to 160+ beer festivals around the UK and more with membership.



Join and save on beer.  
[camra.org.uk/join](https://camra.org.uk/join)



# THE REAL ALE TRAIL 2026 by Peter Josling

The branch will be running its second Real Ale Trail in February, starting on **Sunday 1st February** and ending on **Sunday 28th March**. Due to popular request, it will run for two months this year.

## Twelve pubs will be taking part:

*The Engineers Arms, Henlow; The Admiral, Clifton; The Cock, Broom; The Plough, Langford; The Crown, Biggleswade; The Golden Pheasant, Biggleswade; The Sir William Peel, Sandy; The Thornton Arms, Everton; The Rising Sun, Potton; The Stag, Stotfold; The Crown, Stotfold; and The Chequers, Wrestlingworth.*

You can collect a Real Ale Trail card from any of the participating pubs. Each pub has a unique stamp, and the aim is to collect all twelve. Once completed, hand your card in at the final pub visited, remembering to add your name and contact details. You will then be entered into a prize draw, with prizes donated by two local breweries: Buntingford Brewery and Tring Brewery, each offering a pair of brewery trip vouchers.

In addition, three guided walks will take place on the following dates:



## 7th February

Start in Biggleswade at 11.00. There are bus replacement services on the trains that weekend, with scheduled buses arriving at 10.53 from Sandy and 11.07 from Arlesey, plus regular bus services. If we know people are joining, we can wait for them. Pubs visited will be The Cock, Broom; The Plough, Langford; The Golden Pheasant, Biggleswade; finishing at The Crown, Biggleswade, where onward public transport is available.

## 28th February

Start at Arlesey just after 11.00. There is an 11.05 train arrival from Sandy and Biggleswade, departing Sandy at 10.55. Pubs visited will be The Stag, Stotfold; The Crown, Stotfold; The Engineers Arms, Henlow; finishing at The Admiral, Clifton. From there, people can walk back, catch the 9A to Arlesey station, or make their own travel arrangements.

## 14th March

Start at The Chequers, Wrestlingworth at 12.00 when it opens. The 72 bus stops directly outside. Buses leave Biggleswade at 11.10, arriving at 11.28, and Sandy at 11.16, arriving at 11.43, so there may be a short wait. Pubs visited will be The Chequers,

Wrestlingworth; The Rising Sun, Potton; The Thornton Arms, Everton; finishing at The Sir William Peel, Sandy, where public transport is available.

For further information about the walks, please contact **Ieuan Smiton** at [smith.ieuan13@googlemail.com](mailto:smith.ieuan13@googlemail.com). I hope you enjoy the trail, and good luck in the draw.



LIVINGLIFE HELPS YOU WIN MORE LOCAL BUSINESS.  
GET YOUR SERVICES IN FRONT OF THOUSANDS OF  
HOUSEHOLDS AND DECISION-MAKERS EVERY MONTH.

## KEY BENEFITS OF LOCAL PRINT ADVERTISING



### TRUSTED & TANGIBLE

- people keep and come back to magazines when they need a service.



### HYPER-LOCAL REACH

- directly targets households and businesses in your area.



### LONG SHELF LIFE

- unlike online ads that vanish, print stays in homes for weeks.



### BUILDS RECOGNITION & CREDIBILITY

- being seen regularly builds trust in your brand.



### COST-EFFECTIVE

- affordable packages tailored for small and medium businesses.



**WANT MORE LOCAL CUSTOMERS? ADVERTISE IN LIVINGLIFE TODAY.**

# AWAY DAYS – A BRIEF DESCRIPTION

One Tuesday afternoon in 2024 a few of us old timers, whilst enjoying a beer or two in the Engineers Arms, decided that we needed to get 'out and about' a bit more. The idea was that once a month we would use public transport and enjoy a pub crawl in different locations.



On the longer trips where the time spent travelling is excessive, we arrange a night stop, usually in a cheap Travelodge hotel.

The away day trips started life as a WhatsApp group but are now also shared with East Beds CAMRA members via the online newsletter. The actual date of each away day is decided on a Tuesday afternoon by a core group. We each buy our own tickets and meet at the railway station or on the nominated train. The post visit reports are usually produced by Phil Crate for publication in 'Look Yeast!'. All are welcome to join us on any of the away days. The only qualification required – a thirst and plenty of money!

## **Some of the recent trips we have completed:**

**Aug 2025 - a tour of the pubs in the centre of Ware**

**Sep 2025 - a tour of the pubs around Ely**

**Oct 2025 - a tour of the pubs in London that are located between Holborn and Kings Cross**

**Nov 2025 - a tour of the famous Bermondsey beer mile and nearby cask ale pubs**

**Dec 2025 - a visit to the Cambridge Corn Exchange for the winter beer festival**

## **Trips planned for next year:**

**Jan 2026 - a tour of the pubs in the centre of Brighton (with overnight stop)**

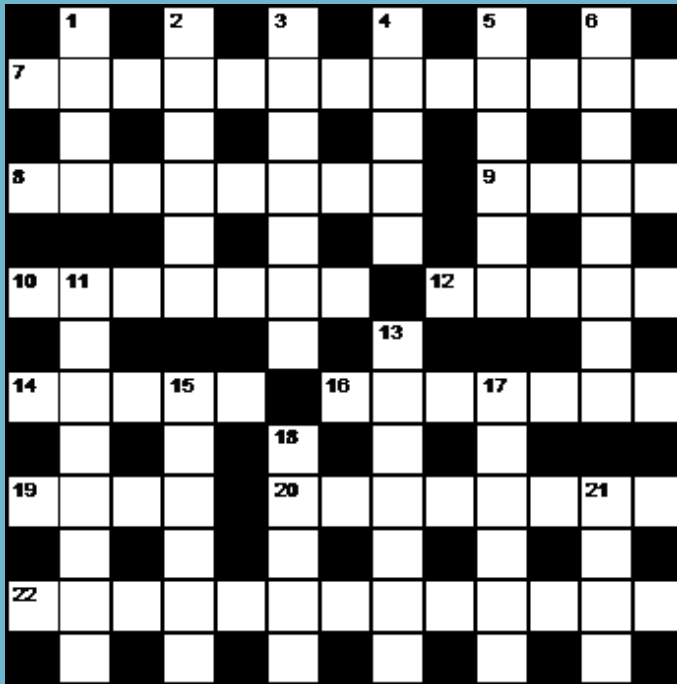
**Feb 2026 - a tour of the pubs in the centre of Leeds (with overnight stop)**

**Mar 2026 - a tour of the pubs around the old village of Walthamstow**

**Apr 2026 - a tour of the pubs in Huntingdon plus 'The King of the Belgians' in Hartford village**

# THE YEAST CROSSWORD

Can you complete our tricky crossword? Answers on P13



## ACROSS

- 7 Best lifesaver around for popular events (13)  
 8 Do all but comb every inch of the West Country to bottle this beer (8)  
 9 Instrument reported stolen (4)  
 10 Involve fuel added to part of smouldering fire losing energy (7)  
 12 Playing marbles Lord is in a corner (5)  
 14 Fruit shot (5)  
 16 Officer said to be a fan of gore? (7)  
 19 What may leave a ship in trouble comes back as a hero (4)  
 20 Part of church has abnormal patterns (8)  
 22 Put moralities astray to get royally drunk maybe (8,5)

## DOWN

- 1 I'm keen but even I see the writing on the wall (4)  
 2 Bravo, a quick one as a stiffener (6)  
 3 A dimmer switch for lady of the sea (7)  
 4 Flamboyant queen said to be less cool in the water (5)  
 5 Dumping metal in river could be the end for Arthur (6)  
 6 Andy's missus on a register, his first, commanded by 16 maybe (8)  
 11 Marmite I spread for such as 6 and 16 (8)  
 13 Ale idly drunk in a most suitable way (7)  
 15 See 21  
 17 Units I changed without moving (2,4)  
 18 Good taste in beer includes what it can be drunk from (5)  
 21/15 Report lump dissolved in dark beer (4,6)

# HADRIAN'S WALL ALE TRAIL by Ieuan Smiton

Over nine days in September 2025 I fulfilled a bucket list dream of walking Hadrian's Wall. Even better, and far more challenging, I did it with my two year old daughter on my back. In true CAMRA fashion, I turned the National Trail into an Ale Trail, sampling the pubs and beers of northern England along the way.

We started in the west at Bowness-on-Solway, toasting the beginning of our walk in the village pub, The Kings Arms. A traditional pub with exposed beams, it had previously featured in the Good Beer Guide and was due to return in 2026, though it was absent in 2025. Three handpulls were available, with one on when we visited, Spun Gold, 4.2%, from Carlisle Brewing Co. The quality was fine and it felt a fitting start to the journey.



The first day offered tranquil views across the Solway before torrential rain set in. Thoroughly soaked, we were very glad to reach the Drovers Rest in Monkhill, a classic Hadrian's Wall stop and a 2025/26 Good Beer Guide entry. This welcoming village pub has wooden walls, side rooms and a real sense of warmth. Dinner was homemade and home smoked Cumberland sausages, either as hot dogs or with mash, which were outstanding. The ale was equally impressive, with four changing pumps. I enjoyed LB101 Bitter, 3.4%, from Lune Brew, Brehon Blonde, 4.3%, from Brehon Brewhouse, and Patrick Hazy, 5.3%, from Nightjar.



Day two took us east along a fast flowing River Eden, stopping in Carlisle. After visiting the castle, we called into the Sportsman Inn, the nearest Good Beer Guide pub that allowed children. This small historic pub has aged beams and a compact bar, giving a proper locals feel in the city centre. Three ales were on, with Flaxen, 4.5%, from Carlisle Brew Co and Cheshire Cat, 4%, from Westwood Ales both served in excellent condition. We then battled through floodwater before finishing in Crosby-on-Eden.

On day three we left civilisation behind, climbing higher alongside the Roman Vallum. A highlight was the Old Vicarage Brewery in Walton, a nanobrewery housed in a former vicarage garage, with a tiny bar opening onto a beer garden overlooking the valley. I tried their For Keeps!, 3.7%, a sour pale that was not quite to my taste but well made. We ended the day at Lanercost Priory.

Day four began with a tough climb, rewarded by our first sections of stone wall and the best preserved turf wall. We passed Birdoswald Fort before finishing near the Roman Army Museum at Haltwhistle, sadly without time for a pub stop.

Day five was the hardest, featuring the most famous and best preserved sections of Hadrian's Wall, including Sycamore Gap. After finishing at Housesteads Fort, we drove to Twice Brewed Brewery at Once Brewed. The tap room overlooks the working brewery and serves draft beer only, where I enjoyed a tasting flight. Next door, the Twice Brewed Inn, a 2025/26 Good Beer Guide entry, offered six handpulls of brewery beers. The cask quality here was the best of the entire walk, particularly the Best Bitter, 3.8%, and Sycamore Gap Pale, 4.1%.



Day six marked the end of the highest ground, with flatter walking to Chesters Roman Fort on the River Tyne. Despite another missed pub visit, the fort and Roman baths were well worth the stop.



Day seven finished at the Robin Hood Inn, a favourite with walkers. This traditional rural pub features wood panelling, solid furniture and a period fireplace, ideal on a cold day. Three of the four handpulls were on, all local, with cask ale in excellent condition. I enjoyed Wagtail, 3.8%, from Allendale and Northern Pale, 4.1%, from Hadrian Border Brewery.



On day eight we returned briefly to the Robin Hood Inn before heading towards Newcastle. Dropping down to the Tyne, we finished at The Keelman, a 2025/26 Good Beer Guide pub attached to Big Lamp Brewery. Housed in a former pumping station, it has a striking stone interior and six handpulls. I tried Sunny Daze, 3.6%, and Prince Bishop, 4.8%, which were acceptable, though the cask quality did not stand out.

The final day took us through central Newcastle before ending at Segedunum Fort in Wallsend. Completing 84 miles with my daughter felt like a huge achievement. We celebrated with a visit to the Bridge Tavern, another 2025/26 Good Beer Guide entry and home of Wylam Brewery, located beneath the Tyne Bridge. With eight handpulls and a wide range of cask ales, I enjoyed a celebratory flight, with Tavern Gold, 4%, and Knock the Corners Bitter, 4.8%, being the highlights.

Hadrian's Wall is a stunning walk, rich in history and scenery, but it is also a brilliant route for discovering northern pubs and cask ale. Overall, the quality did the region proud and I would wholeheartedly recommend it.

# PLOUGHING THROUGH THE ALES'

by Ieuan Smiton

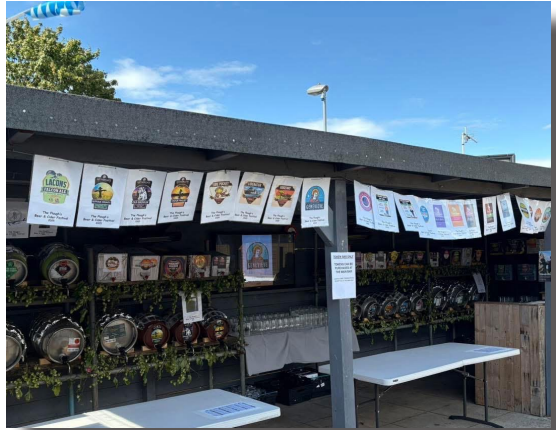
In September, **The Plough** in Langford hosted its **4th Annual Beer & Cider Festival**. Attendees were treated to 45 different tipples! (24 ales and 21 ciders.) As usual, Andy and Sophie did a great job at catering to a wider range of clientele, ensuring that everyone could find something they enjoyed. A huge personal thank you shoutout must also be made to Andy, as he specifically went out and sourced the mixed perry/cider 'Pyder' by Gwynt-Y-Ddraig for my wife - her favourite drink from her uni days in South Wales and one that is rather difficult to source around here.

If that wasn't enough, over the days of the festival there was also a packed out quiz, a disco, live music, a cocktail bar, and various food vans. We really were spoilt for choice! The final day also saw the festival treated to being a stop on one of the historic bus routes for the United Counties Preservation Group historic bus run - allowing people to reach the festival in style. Now after that list, you really would need to sit down for a drink.

Despite having only returned from an international work trip at 7pm, I was able to get down to the festival within 2 hours on the Friday night, where some fantastically enthusiastic disco dancers were enjoying the evening! I was able to get down on Saturday. My wife's Australian relatives were visiting and they were keen to enjoy British ale again - and what better way to give them that experience?

Thanks to the Plough's flights, I was able to enjoy 12 of the ales on offer - though starting the Saturday with a 'Nene Valley' flight which included one of the festival's strongest ales was deemed (rightly) a 'bold move' by Andy. My favourite of the festival was 'Old Man and the Sea' (4.1%) by The Mighty Oak Brewing Company, closely followed by 'Encore' (3.8%) by Lacons Brewery). As always at The Plough, the ales were nicely served in a friendly, welcoming environment.

Overall, from a participants experience I thoroughly enjoyed the festival and I am sure many others did as well. It was wonderful to see Andy and Sophie's hard work pay off and I am very much looking forward to next year's festival!





# HISTORIC BUS TRIP by Barry Price

As Wallace would undoubtedly have observed, 14th September was a 'Grand Day Out' for those Branch members fortunate enough to have been able to benefit from the generosity of the United Counties Preservation Group in conjunction with Biggleswade Town Council and Grant Palmer in providing a number of charabancs to whisk thirsty CAMRA members from Pub to Pub. Biggleswade was the transport hub for this one-off Sunday Service – of course a customer focussed transport system would ensure that there were always buses available for those requiring Sunday public transport and 'refreshments', but then we are the fifth or sixth richest country in the world so shouldn't expect too much, should we?

A variety of routes were available...I have no idea of the popularity of each but the Plough, Langford; Engineers Arms, Henlow; Admiral, Clifton was well supported with the biggest surprise being a Hong Kong double decker negotiating East Bedfordshire's highways and byways.

May I pass on the thanks of the Branch to all of those concerned for the provision of this excellent opportunity to enjoy some of our pubs which can sometimes be a little more difficult to visit.



4TH ANNUAL



7-9  
MAY

FREE  
ENTRY

2026

**BEER & CIDER FESTIVAL**  
**45+ ALES, CIDERS & PERRIES**  
**FOOD – SPACIOUS GARDENS**

CO-HOSTED WITH EAST BEDS CAMRA AT  
BIGGLESWADE CONSERVATIVE CLUB,  
SG18 8BA

OPENS AT 3PM ON THURSDAY  
NOON ON FRIDAY & SATURDAY



[WWW.BIGGBEERFEST.ORG](http://WWW.BIGGBEERFEST.ORG)





- ✓ WINDOWS
- ✓ DOORS
- ✓ ROOFLINE
- ✓ CONSERVATORIES & WARMROOFS

YOUR LOCAL EXPERTS FOR UPVC,  
COMPOSITE AND ALUMINIUM INSTALLATIONS



SHOWROOM NOW OPEN IN CLOPHILL

✉ [admin@globehomeimprovements.co.uk](mailto:admin@globehomeimprovements.co.uk)

🌐 [www.globehomeimprovements.co.uk](http://www.globehomeimprovements.co.uk)

☎ **01525 304060**