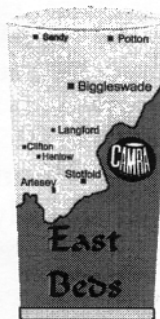




# FREE THE CASKET FREE

NEWSLETTER OF THE  
EAST BEDFORDSHIRE BRANCH OF  
THE CAMPAIGN FOR REAL ALE



## Three in a row !

The Bedfordshire Pub of the Year award has been won by the Engineers Arms, Henlow for the third consecutive year.

The East Bedfordshire pub of the Year has also gone to the Engineers Arms once more.

Branch Chairman Chris Bunyan said "The Engineers is a worthy winner of these awards, the consistent quality of the Beer, the variety and the whole atmosphere of the Pub goes to making it the best in Bedfordshire !"

Our picture shows Kevin and Claire of the Engineers Arms, Henlow receiving their award from branch secretary John Walsh, and committee member Bob Trenholme



***EAST BEDFORDSHIRE CAMRA IS 10YEARS OLD!***

**AN EVENING TO CELEBRATE**

***FRIDAY DECEMBER 10<sup>TH</sup>***

**CHRISTMAS ANNIVERSARY DINNER**

**TUDOR OAKS, ASTWICK.**

**To book contact Tony on 07786 248666 Or 07753 775209**

**CELEBRATE EAST BEDS CAMRA'S 10th BIRTHDAY  
IN STYLE**

**YES, IN 2004**

**YOUR LOCAL BRANCH IS 10 YEARS OLD,**

**East Beds** now has its own web site. You can find us on [www.eastbedscamra.org](http://www.eastbedscamra.org).

Any comments on the web site or suggestions for improvement are welcome. From this issue the Casket can also be found on the web site.

The site is still in its early days so is not yet complete, please bear with us, and please give us suggestions as to what to include.

Links can be found to other local branches and to the main CAMRA website.

The diary of forthcoming events, and branch contacts all form part of the site for your information.

## **QUIZ ANSWERS**

1. Sir Benjamin Hall, commissioner of works.
2. Aneurin Bevan
3. Cristopher Cockerill
4. Testing the density of liquid
5. Lanolin
6. Marshall islands
7. 30
8. Its Passion plays
9. Plimsoll line
10. Mary Sheley

## OUR ADVERTISERS

**The business' that support the "Casket" by placing advertisements mean that we can continue to offer the magazine to you without charge. Please support them by using their services**

### **Knowing your Beer** **Types**

Beers ingredients: water, malted barley, hops and yeast and deciding the type of beer produced is determined by the amount of malt used, the type, amount and method used when hops are added, and the strain of yeast used to ferment the beer. Additional products are also added for speciality beers such as chocolate, honey, spices and fruits.

#### **Ale**

Ale is any brew made with a top fermenting yeast which can be made into Bitters, Brown Ale, Indian Pale Ales, Light Ale, Old Ales and Scotch Ales. Top fermenting refers to the tendency it has to gather at the surface of the brew during the first few days before settling to the bottom. Fermentation must take place in warm temperatures for the yeast to multiply.

#### **Stout**

This is an extra dark top fermented brew which is made with highly roasted malts. Originally called Stout Porter.

#### **Porter**

A London style similar to a stout but less strong than stout. The beer seems to have been first brewed in the 18<sup>th</sup> century in response to a demand, perhaps by market porters for a half and half – a blend of ale and beer, or for three threads, a mixture of ale, beer and the weak twopenny.

#### **Lager and Pilsner**

Any beer made by bottom fermentation which is usually golden in colour. The first golden lager was Pilsner Urquell

in 1842. Before then they were dark. The term usually denotes the most basic of beers. Lager yeasts need cool temperatures during fermentation.

#### **Trappist**

Associated with the Trappist Order of monks. There are six breweries in Belgium and one in the Netherlands. Trappist Beers are top fermented using Candy Sugar and are strong in alcohol and flavour. They are always bottle conditioned ABV 6-12%.

#### **Abbey**

Often made under licence from an abbey often imitating the Trappist style.

#### **Barley Wine**

A strong fermenting ale.

#### **Steam Beer**

The beer has a distinctive method of production whereby the lager yeast is used at ale temperatures in shallow steam when the casks are tapped.

#### **Organic Beer**

Brewed using organically grown ingredients.

#### **Wobble**

In the 19<sup>th</sup> century Wobble was obtained from a black country small brewer and was the last shut of the brew. The first shut was ale, the second beer and the third wobble. It was sold mainly to colliers, ironworkers, nailers and others in hot dusty work.

#### **Weiss bier (Wheat) Beer**

This is an ale made from wheat. It is usually cloudy and sometimes has a whitish appearance.

#### **Smoked Beer**

This beer is known as Rauchbier in Germany. A brewer fires his malt over a wooden fire and lets the smoke absorb into the grains giving a smoky taste to the beer.

Enjoy your Real Ale!

Clifford Luff

## East Beds CAMRA Branch Area



The map above indicates the part of Bedfordshire covered by the Branch as that enclosed by the thick outline.



### **The Potton Brewery Co.**

**10 Shannon Place,  
Potton, Sandy, Beds. SG19 2PZ  
Tel:- 01767 261042  
[www.potton-brewery.co.uk](http://www.potton-brewery.co.uk)**

**Suppliers of 'Real Ale' in  
Cask, Polypin or Bottle to the  
Licensed Trade and General  
Public.**

**For Product Details and Prices  
Consult our Website or Call the  
Above Number.**

**BREWERS OF BEDFORDSHIRE  
BEER OF THE YEAR 2003  
THE VILLAGE BIKE**

## **Pub Feature**

### **Queen's Head, Sandy.**

The Queen's Head, Sandy was built by William Randall in the 1750's and was in the family for 100 years.

It was originally known as the "Maidenhead" and is one of Sandy's oldest pubs, possibly the oldest. There have been various owners but is now in the hands of The Greene King Tied Estate.

There have also been many changes since 1957 including the sale of a large part of the garden and orchard which has now become a car park but the building still retains much of the original construction and old world character.

The current tenant is Claire Ryan who has been there for the last ten years. The pub has a pleasant garden, to be enjoyed in the summer and there is always a welcoming roaring log fire in the colder months.

The Queen's Head was the winner of the Best Kept Pub/Restaurant in the Sandy in Bloom Competition 2003. It also has a team of very keen petanque players who compete in three different leagues. The beers are obviously from the Greene King stable (including guest beers from their range) with IPA being the best seller.

This is an old pub, well worth a visit and you will always receive a warm welcome from Claire and her staff.

## **PUB NEWS**

### **Red Lion, Biggleswade**

Jim and Milly Borland have installed a helicopter garden ride to keep the children amused while mum and dad have a drink on the patio.

The Pub offers a changing guest Ale as well as Greene King beers. Opening hours are 12-11 summer, 4-11 winter. 10.30 closing on Sundays.

### **White Hart, Biggleswade,**

Well known Pub on the market square run by Dean Turnidge. Pub features a patio for the better weather, offers meals and snacks in the bar and has a Tuesday quiz night with karaoke on Thursday. Opening hours, 11-11, 12-10.30 Sunday.

### **Lord Roberts, Sandy**

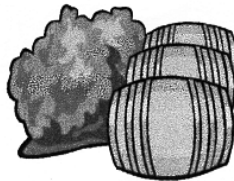
A couple of months ago, after sixteen years in the pub trade as tenant and manager, Sharon with her partner Steve, took over as relief manager at the Lord Roberts, Sandy. After a spell of no real ale, the Charles Wells' pub is now serving Eagle and guest beers from the Charles Wells' portfolio. Sharon and Steve will be in the pub until at least October, when the pub will be closed for three to four weeks for a complete refurbishment. This is the only Charles Wells' pub in Sandy, the remainder being Greene King and one Freehouse. As we go to press there may already be further changes at the Lord Roberts!

## **THE SIR WILLIAM PEEL HIGH STREET, SANDY**

### **A VERY WARM WELCOME AWAITS YOU**

An ever changing range of Real Ales  
Supplemented by our own brew from the  
**"OLD STABLES BREWERY"**

Just a five minute walk from the station!



## **Bedfordshire CAMRA's 30th Birthday party**

---

The party took place at the Sow and Pigs, Toddington where the Bedfordshire branch (s) were formed.

It was a pleasant afternoon, and attended by thirty plus members from all three branches. The beer and food were excellent and so was the hospitality.

We managed between us to consume most of two tubs of Beer, but could not quite fight our way through the enormous buffet. Talk was obviously about CAMRA and how far we had come in thirty

Years. Now Bedfordshire has three branches, in those heady days of 1974 it was an achievement to set up the one original branch so soon after the CAMRA organisation itself had started.

Talk wandered off into all sorts as the day went on and we were all grateful to the Landlord for keeping us Entertained between drinks, he is quite a character.

Each of the three branches is holding separate events to mark the occasion, East Beds is to combine both the 30th with our own 10th

Anniversary with a party at the Engineers Arms, Henlow on 27th October.

### **The Kings Arms**



LONDON ROAD, SANDY, BEDS. SG19 1HA  
(Just off the A1 Trunk Road)

Telephone: (01767) 680276 Fax: (01767) 691737

NON  
SMOKING  
AREA

Open all  
year



Under the  
personal  
supervision  
of the  
proprietors:  
Ken and Jean  
Parry

Listed 17th  
century  
building



## MEMBERSHIP MATTERS

Welcome to the following new members joining East Beds CAMRA

Darren Burrett, Neil Connolly (Biggleswade)

Patrick Tomkins, Aileen Wilson, Peter Josling, Sue Drummond (Arlesey)

Bob Charles, Michael Cross (Henlow)

Phil & Cynthia Pranes (Lower Stondon)

East Beds currently has 170 Members.

### **Join CAMRA today**

CAMRA currently has around 72,000 members and we would love to get it to 100,000 by the end of next year.

100,000 members would give us a more powerful campaigning & political voice and increased resources for saving more beers, pubs & breweries.

Join us now in the fight to keep our Real Ale and Real Cider & Perry heritage.

### **Current rates are:**

Full single membership £16

Joint membership for a partner living at the same address is £3 extra

There are concessionary rates of £9 for people who are Disabled, Under 26, a Student, 60 & over or unemployed.

If you join using Direct Debit, there is an extra 3 months membership free and you won't have to keep remembering to renew it every year. It also helps greatly with the processing & admin at Camra HQ.

### **Membership benefits:**

Our lively newspaper What's Brewing with the latest news on pubs & beer both locally & nationally

Free or substantially reduced entry to all Camra beer festivals. Regular local social events, brewery tours & visits.

Discounts on many CAMRA products including the best selling Good Beer Guide and savings with many third party groups such as hotel accommodation, CDs & DVDs etc.

Plus you will be supporting CAMRA on issues such as full pints, extended pub hours and availability of Real Ale, both locally & nationally.

To join CAMRA simply fill in the membership form in this newsletter or one of the forms available in many pubs or online at [www.camra.org.uk](http://www.camra.org.uk)

Alan Binnington (Membership secretary) 01462 638060

e-mail:

[membership@eastbedscamra](mailto:membership@eastbedscamra).

# Beer Inn Beds



**The CAMRA guide to pubs in  
Bedfordshire & Luton**

**New Edition 2003**



## OUT NOW

**The new guide to every  
licensed house in  
Bedfordshire that is freely  
open to the Public.**

**Cover price of just £3.00**

**GUIDES MAY BE PURCHASED  
FROM YOUR LOCAL PUB,  
OR DIRECT ( £3.50 ) FROM  
ALAN BINNINGTON  
18 KINGSWAY  
STOTFOLD, HITCHIN,  
HERTS. SG5 4EL**

## QUIZ

1. After whom was the bell  
"Big Ben" named ?
2. Who founded the National  
health service?
3. Who invented the hovercraft?
4. For what is a hydrometer  
used?
5. What is the name of the wax  
obtained from sheep's wool?
6. Of which group of Pacific  
islands is Kwajalew the main  
island?
7. How old is Bedfordshire  
CAMRA?
8. For what is Oberammergau in  
Germany internationally  
known?
9. How better do we know the  
loading line on a ship?
10. Who wrote the Frankenstein  
stories?

Answers on Page 2



## Fresh Cuisine


FOR LOVERS OF THE FRESHEST SEAFOOD!

Lobsters, Lobsters, Lobsters!

Loch Fyne oysters, mussels and seafood

Also available the finest Scotch and Welsh beef  
and lamb. Vegetarian and vegan

.....  
Traditional Roast Sunday Lunch



7 real ales, real cider and perry  
9 years in CAMRA good beer guide.  
Find us on the A1 near Stotfold



**THE TUDOR OAKS LODGE**  
*Taylors Road, Astwick, Hitchin, Herts, SG5 4AZ*  
**Tel: 01462 834133**

### Cask Marque

Local Pubs which have the Cask Marque recognition are,  
Biggleswade: *The Rising Sun*

*Wheatsheaf*

Broom: *White Horse*

Henlow: *Engineers Arms*

Stotfold: *Pig & Whistle*

Other Pubs may have received the award since we went to press. If you are one of them let us know and we will include you in our next issue!

#### What is Cask Marque?

A National independent body formed to raise the standard of cask ale to the customer.

If a Pub does not appear in the guide it does not necessarily mean the Beer is not as good, it may be

that the Landlord did not wish to pay for inclusion, or for various other reasons. What it does mean however is that any pub registered and tested by Cask Marque should serve an excellent pint, so quality is guaranteed. To gain recognition by Cask Marque a publican has to pass two unannounced visits by assessors. Beers are tested at random on taste, clarity, aroma and temperature.

Inspectors may re-visit the premises at any time to check standard are maintained.

For more details you can contact via e-mail on [www.cask-marque.co.uk](http://www.cask-marque.co.uk). or by writing to The Cask Marque Trust, Seedbed Centre, Severalls park, Colchester, CO4 9HT

Please mention the "Casket" when replying to advertisements

## BROMHAM APPLE DAY

The annual apple day event was held again at Bromham water mill, near Bedford.

East beds CAMRA provided the cider bar again for all the thirsty revellers, and for those who like real cider, (or Scrumpy as many people refer to it), but cannot get it locally.

This is our ninth year at the event and still our suppliers are amazed at how popular the drink is in this area, despite many local Landlords telling us there is no call for it!

115 gallons were sold on the day, some from the West country and some from Gloucester.

We had a different supplier this year and were able to offer a much wider choice, which seemed to be popular with the customers.

On offer were Westcroft "Janets Jungle Juice", a 6.0% award winning Cider from Somerset.

Ben Crossman, Richs, Sheppys, with Thatchers Cheddar Valley, an unusually deep orange coloured Cider, all from Somerset.

A single variety sweet Cider from Perry brothers helped to make record sales of our own recipe mulled. Almost forty gallons of this were consumed on the day.

Perry is getting increasingly hard to come by these days, but our one and only offering was from Summers, and sold extremely well.

Scrumpy is, incidentally, a type of very dry west country cider.

Our grateful thanks to all those who helped us on the day.

### **AMBER EMBROIDERY**

ARE NOW STOCKING **GOLFWEAR BY PING AND PRINGLE**

AT DISCOUNTED PRICES INCLUDING POLOS, KNITWEAR, WINDSHIRTS, RAINSUITS.

WE ARE NOW ALSO STOCKING

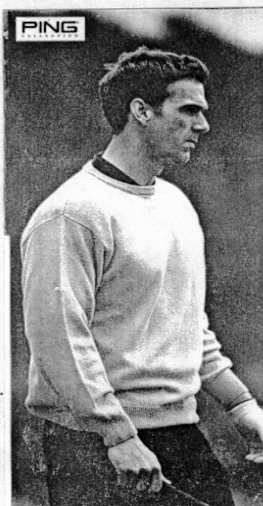
### **KOOGA RUGBYWEAR**

INCLUDING TRACKSUITS, RUGBYSHIRTS AND TRAININGPANTS.

We have great prices on Polos and Sweatshirts for DARTS TEAMS, POOL TEAMS, PETANQUE etc. with FREE SET UP

**RING AMBER EMBROIDERY TODAY**

**01354 657100 and request a brochure**



## BEDFORD BEER & CIDER FESTIVAL

On the Thursday evening off the festival we again took a mini-bus full to the big city of Bedford for our annual pilgrimage.

A mixed bunch of young and not so young attended.

It was nice to have John and Britta Holland back amongst us. His humour has not been stifled by his absence.

All sixteen of us thoroughly enjoyed the evening, although it's fair to say, some of us more than others, (you had to be there!)

The judging for the East Anglia beer of the year took place on Wednesday and was won by Mighty Oak, Burntwood Bitter



**THE  
ENGINEERS  
ARMS**  
HENLOW  
*A Genuine  
Free House*

**Bedfordshire Pub of the Year  
2002, 2003 and 2004**

**East Anglia Pub of the  
Year 2004**

Featured in CAMRA  
Good Beer Guide.

Open Fire

Music Free Lounge

Open all day, every day!

Up to 15  
Real Ales  
Weekly

[www.engineersarms.co.uk](http://www.engineersarms.co.uk)

## COMMITTEE MEMBERS

**2004**

**CHAIRMAN:** Chris Bunyan, The Old Cottage, 1 Ickwell Road, Upper Caldecote, SG18 9BS. Tel: 01767 222860

**SECRETARY:** John Walsh, 9 Fowlers Drive, Meppershall, Beds. SG17 5NJ  
Tel: 01462 850979 (h), 01462 681622 (w), Fax: 01462 681624, e-mail: [walshjjwalsh@aol.com](mailto:walshjjwalsh@aol.com)

**TREASURER:** Sue Bunyan. Details as above

**MEMBERSHIP & PRODUCTS:** Alan Binnington,  
18, Kingsway, Stotfold, Hitchin, Herts. SG5 4EL  
Tel: 01462 638060

Bob Trenholme, 38 The Avenue, Sandy, Beds. SG19 1ER. Tel: 01767 692151

Kevin Machin, The Engineer's Arms, High Street, Henlow, Beds. SG16 6AA  
Tel: 01462 812284

Mark Richards, (webmaster) 89 Broad Street,, Clifton, Beds. SG17 5RP.  
01462 814972

Tony Morris, 9 Bellevue Avenue, Pottton, Beds SG19 2DG, 07786 248666,  
[tonymorris@rspb.org.uk](mailto:tonymorris@rspb.org.uk)

## **HELP CHARITY**

We make no charge for the Casket,  
But if you enjoy reading it and/or  
take a copy home then please consider  
Putting a donation in the Pub's  
charity box

### **Trading Standards**

If you have any complaints about short  
measure, lack of price lists or  
misleading promotion of products  
contact:

*Bedfordshire Trading Standards*  
23 Gadsby Street, Bedford MK40 3HP  
Tel: 01234 346101

### **The Casket**

Published and produced by  
CAMRA East Beds Branch

Edited by:

John Walsh, 9 Fowlers Drive  
Meppershall Beds

SG17 5NJ

Tel: 01462 850979

e-mail: walshjjwalsh@aol.com

The views expressed in the *Casket*  
are those of individual contributors and  
do not necessarily represent the policy of  
CAMRA, the Editor or the Branch.

**Contributions to the *Casket* are  
always welcome.**

Please write to the Editor at the above  
address .

[www.eastbedscamra.org.uk](http://www.eastbedscamra.org.uk)

### **ADVERTISING RATES**

1/6 Page:	£10
1/3 Page	£20
1/2 Page	£30

## **Membership Application**

Please fill in your details below.

Title \_\_\_\_ Surname \_\_\_\_\_

Forename (s) \_\_\_\_\_

Date of birth \_\_\_\_\_

E-mail address \_\_\_\_\_

Partner – (if joint membership)

Date of Birth \_\_\_\_\_

Address \_\_\_\_\_

Post code \_\_\_\_\_

Phone No. (s) \_\_\_\_\_

Please indicate below (circle amount)  
which category applies to the recipient:

Single.....£16

Joint.....£19

Under 26.....£9

Under 26 Joint.....£12

Retired.....£9

Retired Joint.....£12

I enclose a cheque, payable to CAMRA,  
for £ \_\_\_\_\_. Send to: CAMRA,  
Membership Secretary, 230 Hatfield  
Road, St Albans, Herts, AL1 4LW

Signed.....

Date.....